

NEWSLETTER

ISSUE 09

November | December 25

Bee Network Phase 2

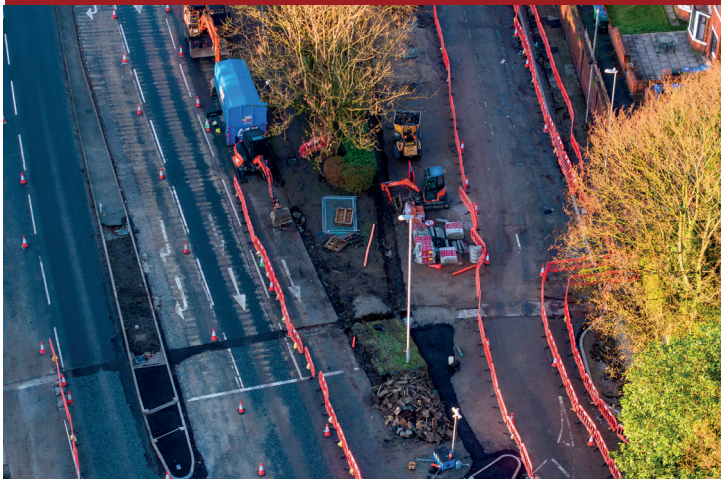
The upgrade of a major stretch of road between Castleton and Rochdale town centre is underway, after the approval of £13.5m of external funding for the scheme.

The Bee Network project will see a number of junctions along the busy A58 Manchester Road upgraded, with new crossings to improve safety for pedestrians and cyclists, and new, optimised lights which will monitor traffic movements and speed up journey times.

Seven junctions are in line for improvements, including Manchester Road and Bolton Road, Manchester Road and Roch Valley Way and Manchester Road and Drake Street.

The project will be delivered in stages over an 18 month period to minimise disruption as much as possible, including:

- A new crossing being created across Manchester Road to enable safe and easy access to Highfield Hospital.
- A new cycle lane being created to extend the existing cycle lane in Castleton from The Royal Toby Hotel into Rochdale town centre.
- New greenery and planting being introduced along Old Manchester Road, alongside road resurfacing, 20mph speed limits and traffic calming measures.
- Increase of parking, with 30 new spaces being created close to Beech House School, to support people using Mandale park.



November

Work to the central reservation and new pedestrian crossing points were completed in November and we also made significant progress on the junctions of New Barn Lane and Old Manchester Road, installing the new drainage system, underground ducts for the new traffic lights and starting on the new islands.

December

The junctions of New Barn Lane and Old Manchester Road should be complete by mid-December and will be re-opened to traffic, although certain turnings will still be banned due to safety reasons (for instance, right-turn movements will be prohibited until the new traffic lights are switched on – the risk of a collision is too high)

Work will also start on the next phase – the construction of the cycleway outside Mandale Park, which will join up with the one constructed when Tweedale St junction was reconfigured.

Work on site will be suspended during the 2-week Construction Christmas shut-down from 19th December and all non-essential traffic management will be removed.



Rochdale
Development
Agency



For any further information or queries please email:

infrastructure@investinrochdale.co.uk